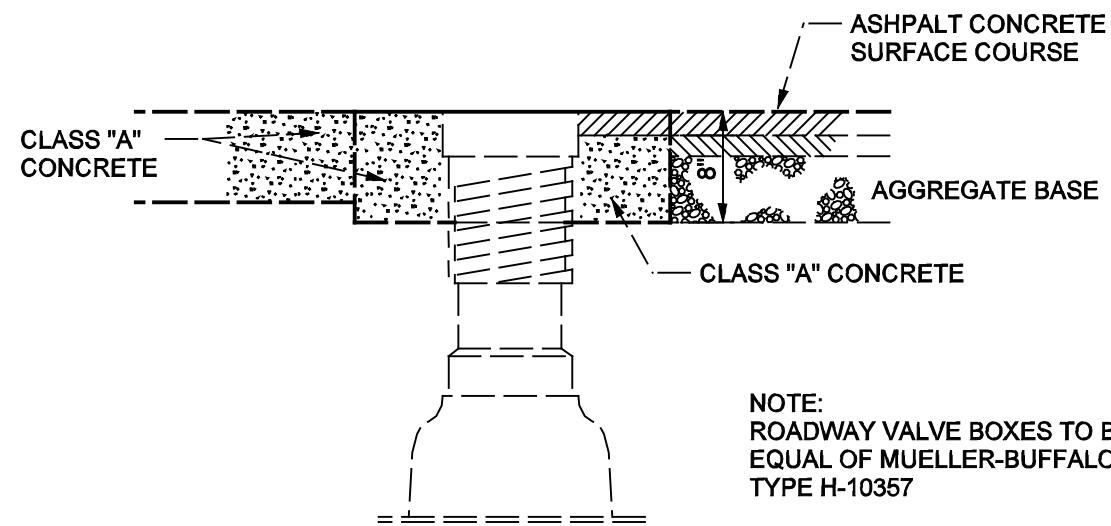
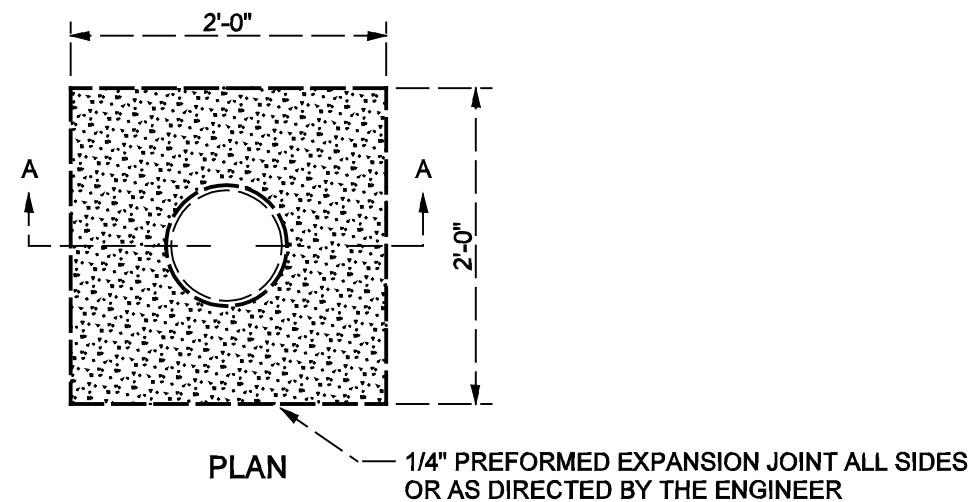


NOTE:  
IN WET AREAS SEAL  
BOTTOM WITH POURED CONCRETE  
BASE OR PRECAST MANHOLE BASE.

### AIR RELEASE VALVE



NOTE:  
ROADWAY VALVE BOXES TO BE  
EQUAL OF MUELLER-BUFFALO  
TYPE H-10357

### SECTION A-A

### TYPICAL CONSTRUCTION AROUND VALVE BOX

MANHOLES SHALL BE INITIALLY SET AT A LOWER THAN  
FINISHED BASE GRADE AND ADJUSTED TO FINAL GRADE  
PRIOR TO PLACING OF THE SURFACE COURSE.