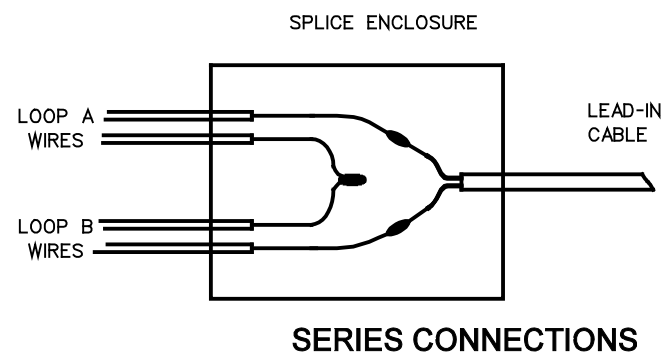


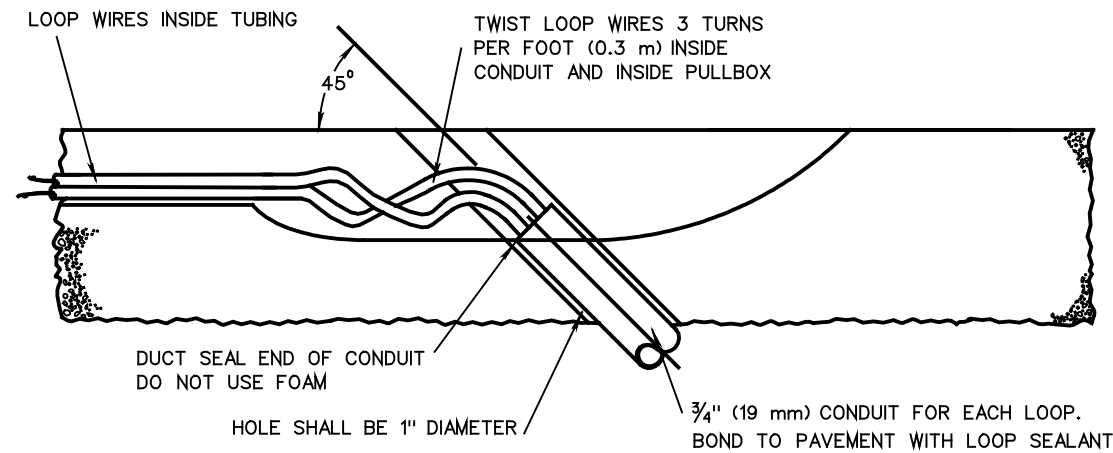
THE DRILLED HOLE SHALL BE LOCATED AS SHOWN ABOVE AND WITHIN THE FULL DEPTH PAVEMENT. IT SHALL NOT BE DRILLED OR CUT THROUGH THE PAVED BERM, CURB OR CURB AND GUTTER SECTION.

**TYPICAL DRILLED HOLE LOCATIONS**

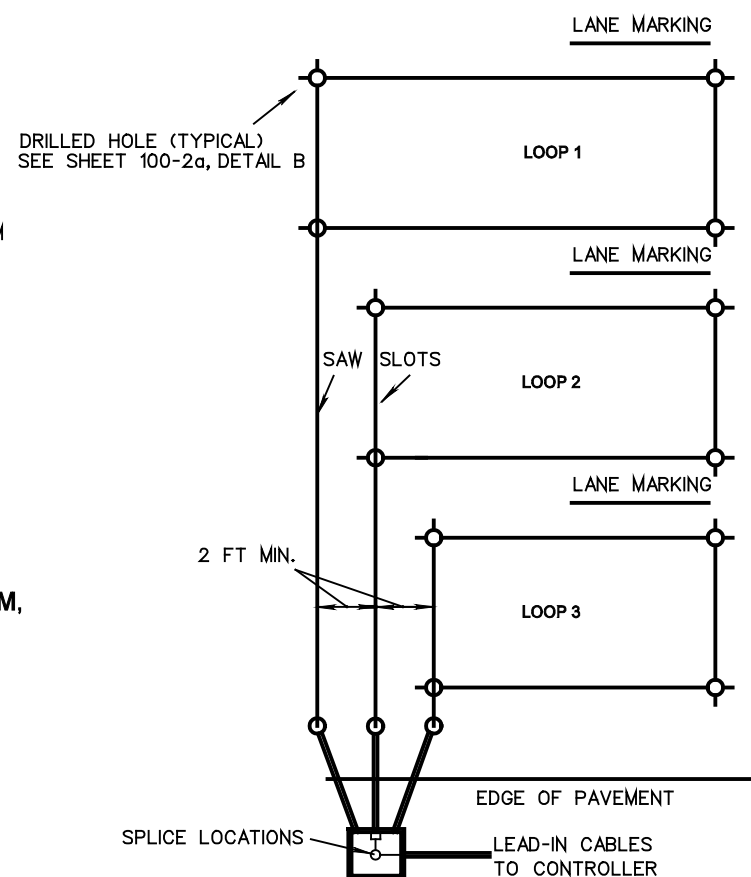


**SERIES CONNECTIONS**

1. WHERE MULTIPLE LOOPS USE A SINGLE LEAD-IN CABLE, SERIES CONNECTIONS SHALL BE USED.
2. A MAXIMUM OF 2 LOOPS (3 WIRE SPLICES) SHALL BE USED IN ANY ENCAPSULATED SPLICE KIT.
3. LOOPS SHALL BE CONNECTED TOGETHER ONLY WHEN SPECIFIED IN THE PLANS. THE SPLICE SHALL BE MADE IN THE PULLBOX. EACH LOOP CONNECTED IN SERIES SHALL BE ROUTED TO THE PULLBOX IN INDIVIDUAL CURB PIPES.

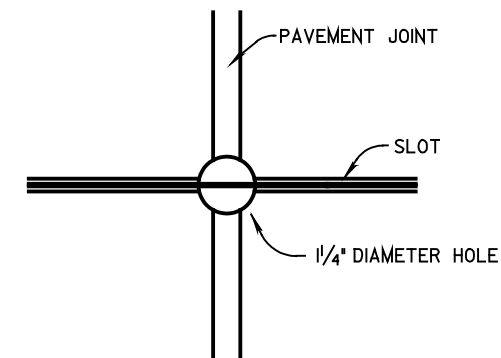


**CONDUIT DRILLED HOLE DETAIL**



**MULTIPLE LOOP LAYOUT**

1. ONLY ONE SET OF LOOP WIRES SHALL BE RUN IN A SAW SLOT.
2. ALL ADJACENT SAW SLOTS SHALL HAVE A MINIMUM DISTANCE OF 2 FEET BETWEEN THEM. NO SAW SLOT SHALL BE LOCATED WITHIN 2 FEET OF A LONGITUDINAL OR TRANSVERSE JOINT IN P.C.C. PAVEMENTS IF THE SLOT IS PARALLEL TO THE JOINT.
3. EACH SET OF LOOP WIRES SHALL BE RUN IN A SEPARATE 3/4 " CONDUIT.



**JOINT CROSSING DETAIL  
IN P.C.C. PAVEMENTS**